

# AKITA EcoDesign

# PANADERO

## PRODUCT PLUS

### ECODESIGN



**EXTERNAL AIR INTAKE**



**DOUBLE LOCK**



**WOOD LOGS UP TO 50 CM**



**220 m<sup>3</sup> HEATING VOLUME**



**CLEAN GLASS SYSTEM**



**TRIPLE COMBUSTION**



**TRIPLE STEEL BODY SHEET 4 + 3 + 2 MM**



**VERMICULITE LINING**



**WOOD LOG STORAGE**

## MEASURES

DIMENSIONS H x W x D **1070x492x492 mm**

GROSS/NET WEIGHT **144/133 kg**

FIREWOOD ENTRANCE **400x380 mm**

SMOKE FLUE **Ø 150-153 mm Top**

EXTERNAL AIR INTAKE **Ø 80 mm**

## CHARACTERISTICS

CAST IRON GRILL

NOMINAL HEAT OUTPUT **7,4 KW**

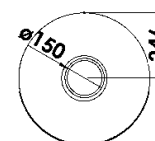
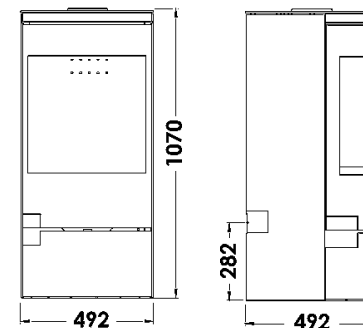
EFFICIENCY **80,7 %**

CO EMISSIONS **0,10 %**

HEAT RESISTANT PAINT **800°C**

CERAMIC GLASS HEAT RESISTANCE **750°C**

EAN 8426964182552  
REF. PANADERO 18255



AKITA EN